

**LACS CACHISCA, COMENCHO et OPATACA  
GUIDE D'INFORMATION PÊCHE-CAMPING  
(Ouverture différée au 15 juin!)**

---

**RUSTIC CAMPING**

**Registration:** Rupert Welcoming Office  
Open from 7am to 5pm

- ❖ Rustic camping-fishing trips must be for a minimum of two (2) nights (certain conditions apply).
- ❖ Rustic camping only (without fishing) is no longer permitted in Wildlife Sanctuaries for security reasons and lack of resources to ensure the surveillance of the territory (poaching).
- ❖ The package includes camping and fishing rights (daily rate/person, minimum of 2 people).
- ❖ Maximum of six (6) people per group (including children).

**Arrival:** 1pm

**Departure:** 1pm

*\* If additional people intend to join your group, we strongly recommend that you make a reservation for these people. That way, and since the number of people per day is limited, they will avoid being denied access.*

*\*\* The confirmation of your reservation is NOT a Right of Access Pass! The Right of Access Passes are issued via the Rupert Welcoming Office and these can be sent to you by fax or e-mail. Please ask for more details.*

**ABOUT CACHISCA LAKE**

**Location:** SOUTH ACCESS - Via Routes 167 South, 113 South, and 32 North:

- From the Rupert Welcoming Office, you have 147 km to go before reaching the lake (77 km paved and 70 km on gravel roads).
- From Chibougamau, you have 129 km to go before reaching the lake (59 km paved and 70 km on gravel roads).

NORTH ACCESS - Via the North Road and Route 32 South:

- From the Rupert Welcoming Office, you have 175 km to go before reaching the lake (on gravel roads).
- From Chibougamau, you have 193 km to go before reaching the lake (18 km paved and 175 km on gravel roads).

**Layout:** Non-landscaped rustic campground – limited to 24 people/day.  
Open rustic camping area.

**Services:** NONE

**Access to Water:** Access to natural water – requires a 4x4 vehicle.

## ABOUT COMENCHO LAKE

**Location:** SOUTH ACCESS - Via Routes 167 South, 113 South and 32 North:

- From the Rupert Welcoming Office, you have 152 km to go before reaching the lake (77 km paved and 75 km on gravel roads).
- From Chibougamau, you have 134 km to go before reaching the lake (59 km paved and 75 km on gravel roads).

NORTH ACCESS - Via the North Road and Route 32 South:

- From the Rupert Welcoming Office, you have 171 km to go before reaching the lake (on gravel roads).
- From Chibougamau, you have 189 km to go before reaching the lake (18 km paved and 171 km on gravel roads). (*recommended access!*)

**Layout:** Undeveloped campsite but rustic camping is permitted in the grip of the road – limited to 30 people/day.

**Services:** NONE

**Access to Water:** Access to natural water on steep ground - requires pushing the boat + a 4x4 vehicle.

## ABOUT OPATACA LAKE

**Location:** SOUTH ACCESS - Via route 167 South, 113 South and 32 North:

- From the Rupert Welcoming Office, you have 127 km to go before reaching the lake (77 km paved and 50 km on gravel roads).

**Layout:** Undeveloped campsite but rustic camping is permitted in the grip of the road – limited to 36 people/day  
Open rustic camping area.

**Services:** NONE

**Access to Water:** Access to natural water on steep ground - requires a 4x4 vehicle.

### **ATTENTION FISHERMEN!**

**Access rights are issued on a 24-hour basis.** They are therefore valid from the time of issuance on the day of your arrival, until the same time on the day of your departure.

You will have to pay the access fees for the entire group, for the total duration of your stay, including those for children under 18 years old. **In the event of late check-out, each member of the group will be required to pay the fees for an additional daily fishing pass.**

## ADDITIONAL INFORMATION

**Species:** Walleye, Pike (in order of importance)

\*the population of brook trout and lake trout is marginal in this area

**Non-drinkable Water:** The water on the site is non-drinkable. It is recommended to bring clean water, or to boil the water available on site from 10 to 20 minutes.

**Territory:** The territory managed by the Nibiischii Corporation is huge, with over 5 000 lakes. Considering that the operations last only about four (4) months, it is very difficult to ensure quality access and updated information for all waterways. Furthermore, several users circulate and occupy the territory which results, in certain situations, to an acceleration of the deterioration of the access roads. Therefore, the quality of the access roads and of the boat launching areas cannot be guaranteed, their access and use being at the client's own risk. The Right of Access Pass is not refundable.

**On the Road:** These lakes are exceptional for walleye fishing. However, the access roads to get to them are of very poor quality and require a minimum ground clearance of 7 inches on your vehicle (branches also regularly rub on vehicles over a distance of about 20 km).

- For clients of Lake Opataca, we recommend to go through Oujé-Bougoumou (Barette-Chapais).
- Several clients of Lakes Cachisca and Comencho, often heavily equipped, prefer going through the North Road, then Route 32 South, even though the conditions are as follows:
  - *By traveling on the North Road, you will have to drive at least 5 hours on gravel surface, taking the chance to meet trucks of logs loaded lengthwise, or fast moving vehicles. These situations can lead to broken windshields.*
  - *By passing through Oujé-Bougoumou, you will have about 3 hours to go, but the road is in bad condition between Lake Opataca and Lakes Cachisca-Comencho (over a distance of about 20 km). The average driving speed on that part varies between 20 and 30 km/h, and it is not recommended if towing equipment.*
  - *We do not recommend passing through Oujé-Bougoumou if you are not using a 4x4 vehicle, or if your vehicle has a low ground clearance.*
- Access roads, such as Routes 32 and 42, are occasionally maintained by forestry companies or Hydro-Québec working in the area. Travelling on such roads requires a vehicle with a ground clearance of at least 18cm (7"), and the awareness that the average driving speed on some parts can be as low as 20 km/h.
- Since the distance to be traveled on gravel roads is considerable, it is strongly recommended to bring two (2) inflated spare tires.

#### **On the Water:**

- Keep in mind that navigating on large and unmarked waterways with lots of rocks and the presence of weather changes that can quickly create dangerous conditions, requires constant attention.
- **Avoid infractions!**
  - Have your fishing permit on you at all times
  - Wear a Personal Flotation Device (PFD)
  - Have a boating safety kit in your watercraft

#### **Other**

- Pets are allowed – please contact us to verify the applicable rules.
- No boat or motor rental on-site – possibility to rent such equipment in Chibougamau.
- No guide services offered.
- Plan a flashlight to move in the dark.

#### **Reminders for a Safe and Responsible Stay**

- Outdoor activities may involve some risk. You must always make sure that you have the skills and abilities required for the chosen activity. It is very important to be aware of the risks involved in this activity, to know and act according to your abilities, as well as to have the appropriate equipment, when required.
- **Federal Regulations prohibits anyone from operating a motorboat unless proving having passed a Boating Safety Course** in Canada before April 1<sup>st</sup>, 1999, **or possessing the Pleasure Craft Operator Card** issued by Transport Canada following the successful completion of an Approved Boating Safety Course.

- **As stipulated in the Wildlife Sanctuary Regulation, every person who practices the fishing activity must, upon departure from the territory, report his/her activity to the place determined for that purpose, the whole by indicating and detailing all daily catches.** Violation of this regulation constitutes an infraction and is punishable of a fine starting at \$250.

<b>NIBIISCHII CORPORATION</b>
<b>LAKES ALBANEL-MISTASSINI-AND-WACONICHI WILDLIFE RESERVE (AMW)</b>
<b>RUPERT WELCOMING OFFICE</b>
1584 route 167 North, P.O. Box 38
Chibougamau (Qc) G8P 2K5
Phone: (418) 748-7748 / Fax: (418) 748-7749
<a href="http://www.nibiischii.com">www.nibiischii.com</a> / <a href="mailto:reservesaamw@nibiischii.com">reservesaamw@nibiischii.com</a>
<i>Cash, Credit, Interact</i>

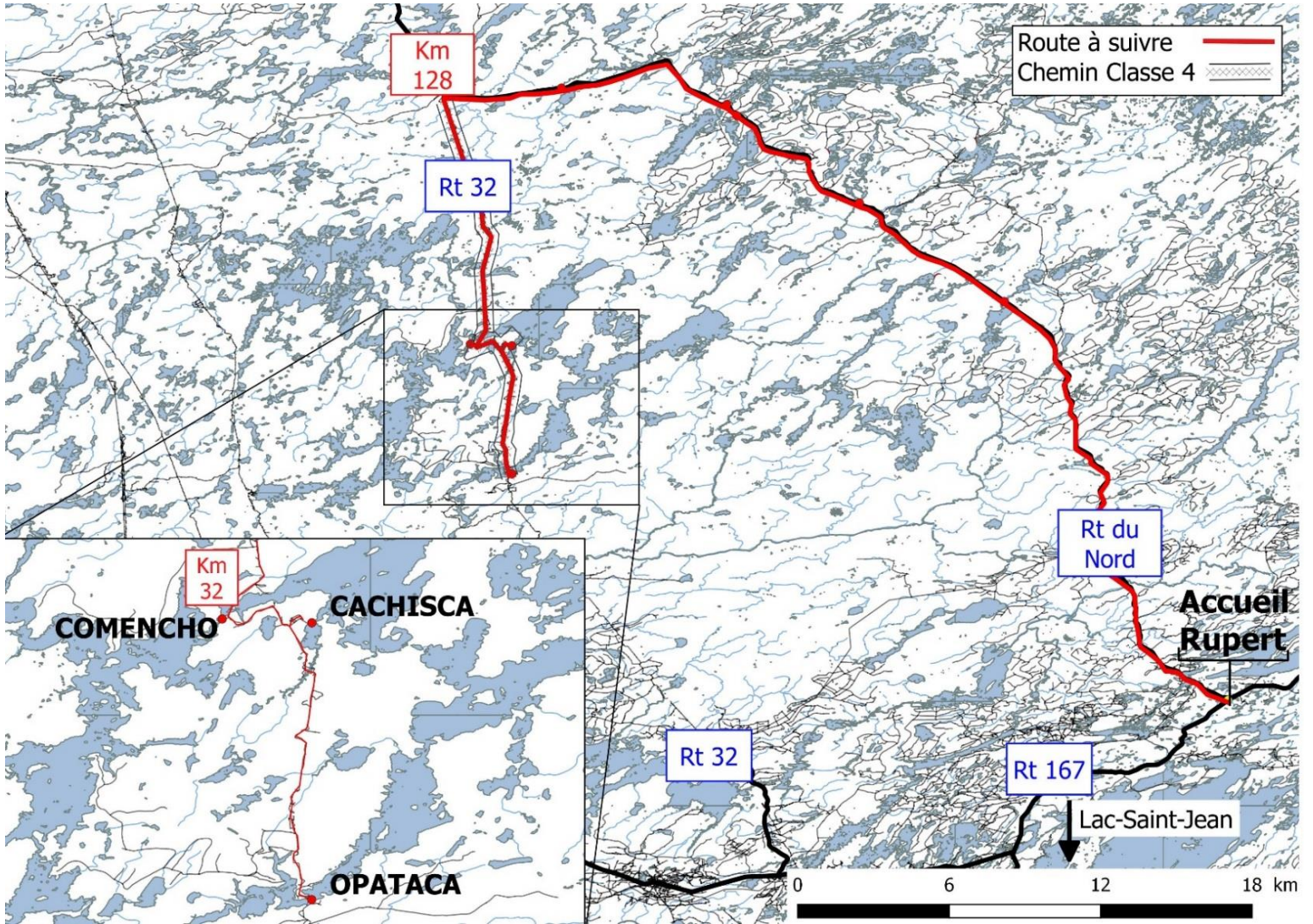
Rupert Welcoming Office's Schedule:

During the season: 7am to 4pm, 7 days/week

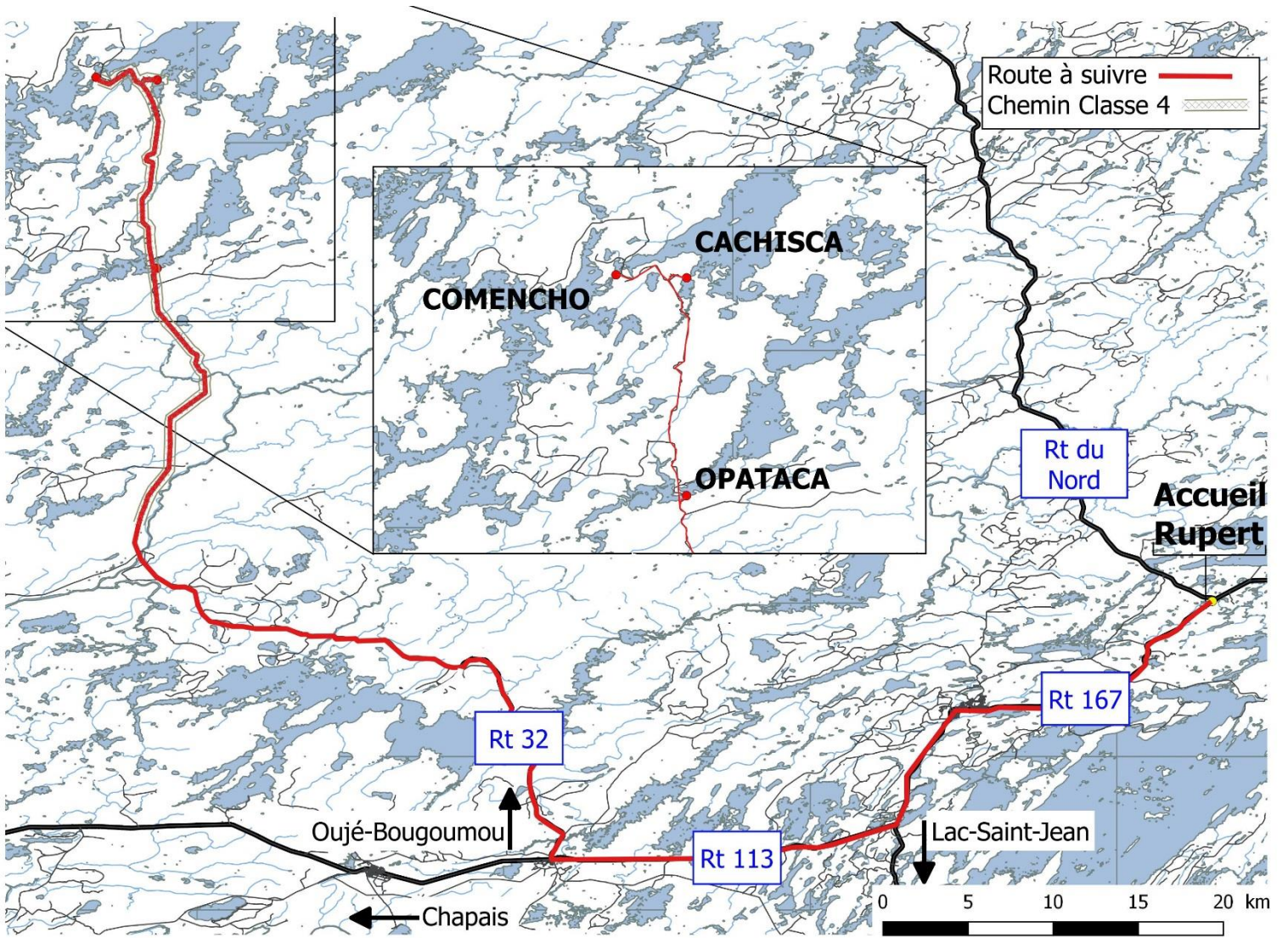
Off-Season: 8:30am to 4pm, Monday to Friday (except for holidays)

*\*\*\*The information contained in this guide is subject to changes without prior notice.\*\*\**

**MAP**



Map 1 : South Access – via route 113 then Oujé-Bougoumou road.



**Map 2** : North Access – via route du Nord (10) then route 32 at KM128.